



Al-Maarif University College Department of Nursing Medical Terminology

Stage -1- Medical Terms of the Endocrine System Lec. 6

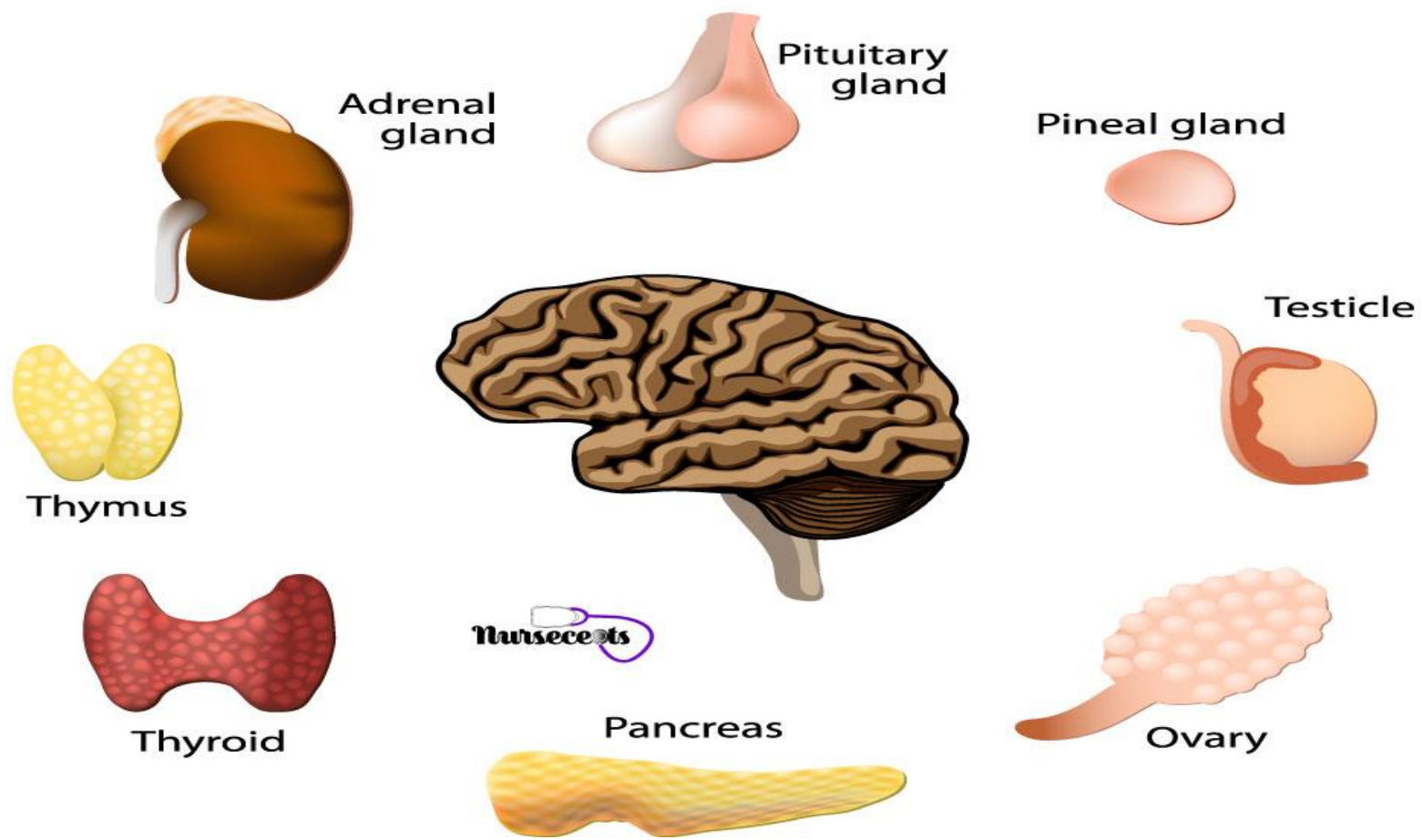
1

Assit.Lacturer Abdulrahman

2024

Word Root and Combining Vowel for the Endocrine System

ENDOCRINE SYSTEM



Term	Meaning	Term	Meaning
Aden/o	Gland	Pancreat/o	pancreas
Adren/o	adrenal gland	Parathyroid/o Parathyro-	parathyroid gland
Adrenal/o	adrenal gland	Pituitar/o	pituitary gland
Corti-	cortex	Thym/o	thymus gland
Gluc/o, Glyc/o, Glycos/o	glucose, sugar	Thyroid/o	thyroid gland
		Ovari/o,	ovary

Endocrine Specialties



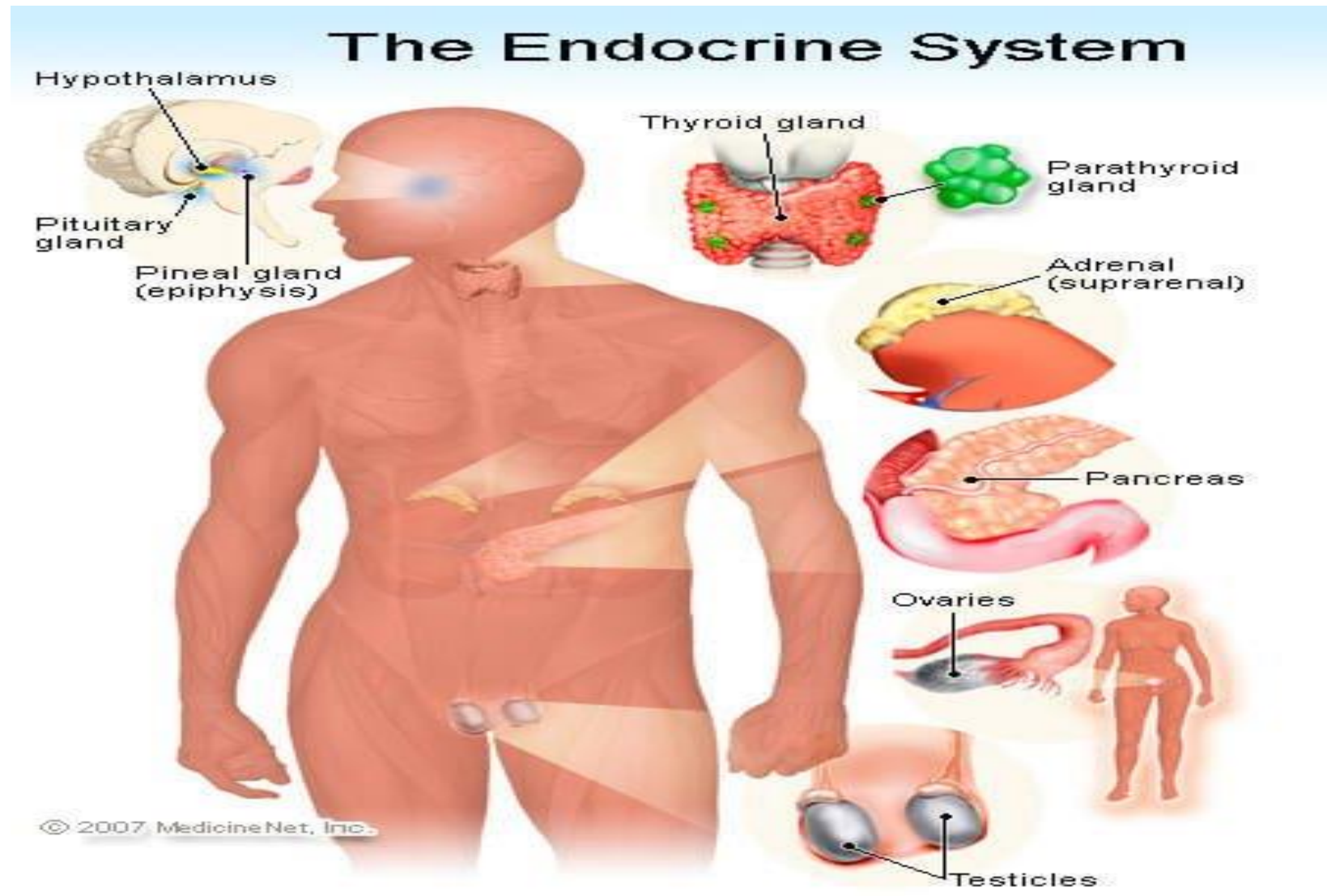
Term**Definition/Meaning****Endocrinology**

Endo means within or inward.
Crine means endocrine secretion.
-ology is the study of.
Endocrinology is a medical specialty that treats conditions related to the endocrine system.

Endocrinologist


Endo means within or inward.
Crine means endocrine secretion.
-logist means one who studies.
An **endocrinologist** is a person who treats conditions related to the endocrine system.

The Structure and Functions of the Endocrine System




Term	Definition/Meaning
Gland	Glands are where hormones are produced and secreted into the bloodstream.
Glucagon	Glucagon is synthesized and released from pancreatic alpha cells in response to low levels of blood glucose, protein ingestion, and exercise.
Growth hormone	The growth hormone affects the growth and development of skeletal muscle in long bones, affecting a person's size and height.
Homeostasis	Homeo- means sameness or similar. -stasis means standing still. Homeostasis means having a consistent internal environment in the body.
Parathyroid glands	Para- means similar or beside. Parathyroid/o means parathyroid gland. Glands are where hormones are produced and secreted into the bloodstream. The parathyroid glands are small and oval-shaped that regulate the blood level of calcium. There are usually four glands.
Pineal gland	Pineal refers to the pineal gland. The pineal gland is located near the center of the brain. It is composed of cells that secrete melatonin.

Medical Term	Definition
Thyroid gland	<p>Thyroid means thyroid gland.</p> <p>The thyroid gland is located in front of the trachea. It is a highly vascular organ and controls metabolic processes throughout the body.</p>
Negative feedback	<p>Negative feedback is when a gland responds to a stimulus by increasing or decreasing the secretion of a hormone based on feedback from different factors.</p>
Insulin	<p>Insulin is produced by beta cells and is the principal regulator of metabolism. Insulin facilitates glucose transport across cell membranes in most tissues.</p>
Cortisol	<p>Corti- means cortex.</p> <p>Cortisol is the most abundant and potent glucocorticoid. It is necessary to maintain life. One major function of cortisol is the regulation of blood glucose concentration.</p>
Ovaries	<p>Ovari- means ovary</p> <p>Ovaries produce and store eggs in females. Also, the ovaries produce estrogen.</p>
Testes	<p>Teste- refers to testicles.</p> <p>The testes produce and store sperm in males. The testes also produce testosterone.</p>
Pancreas	<p>The pancreas is an accessory organ of the digestive system. It produces and secretes digestive enzymes that help to break down starches, fats, and proteins and also, produces hormones that regulate blood sugar.</p>



Term	Definition/Meaning
Adrenal glands	<p>Adrenal means pertaining to the adrenal gland.</p> <p>Glands are where hormones are produced and secreted into the bloodstream.</p> <p>The adrenal glands are small glands located on the upper portion of each kidney. The Adrenal glands are endocrine glands that secrete such hormones as catecholamine's norepinephrine, epinephrine, dopamine and corticosteroids.</p>
Aldosterone	<p>Aldosterone is a mineralocorticoid steroid hormone that maintains extracellular fluid volume.</p>
Corticosteroid	<p>Corti- means cortex.</p> <p>A corticosteroid is any hormone synthesized by the adrenal cortex except androgen.</p>
Endocrine system	<p>Endo means within or inward.</p> <p>Crine means endocrine secretion.</p> <p>The endocrine system consists of a series of organs and glands throughout the body that produce, store, and secrete special chemical messengers.</p>



Diseases and Disorders of the Endocrine System



Term	Definition/Meaning
Acromegaly	Acro- means extremities. Megaly- means great. Acromegaly is characterized by an overgrowth of the bones and soft tissue.
Diabetic nephropathy	Diabetic nephropathy is damaged to the small blood vessels that supply the glomeruli of the kidney.
Diabetic neuropathy	Diabetic neuropathy is nerve damage normally associated with diabetes mellitus.
Goiter	A goiter is an enlargement of the thyroid gland caused by excess secretion of the thyroid-stimulating hormone (TSH).
Grave's disease	Grave's disease is an autoimmune disease of excessive thyroid hormone secretion.

Medical Term	Definition/Meaning
Hyperthyroidism	<p>Hyper- means excessive. Thyroid means thyroid gland. -ism refers to a condition process, theory of, principle, method. Hyperthyroidism is an increased activity of the thyroid gland and a constant increase in synthesis and release of thyroid hormones.</p>
Hypoparathyroidism	<p>Hypo- means insufficient. Para- means similar or beside. Parathyroid/o means parathyroid gland. -ism refers to a condition process, theory of, principle, method. Hypoparathyroidism is due to an inadequate amount of circulating parathyroid hormone.</p>

Term	Definition/Meaning
Hypopituitarism	<p>Hypo- means insufficient.</p> <p>-ism refers to a condition process, theory of, principle, method.</p> <p>Hypopituitarism involves a decrease in one or more of the pituitary hormones.</p>
Hypothyroidism	<p>Hypo- means insufficient.</p> <p>Thyroid means thyroid gland.</p> <p>-ism refers to a condition process, theory of, principle, method.</p> <p>Hypothyroidism results from insufficient circulating thyroid hormone.</p>
Myxedema	<p>Myx- means relating to mucus.</p> <p>Myxedema is a severe form of hypothyroidism due to an accumulation of mucopolysaccharides in the dermis of the tissue. It is characterized by swelling of the face, hand, feet, and periorbital tissue.</p>

Term	Definition/Meaning
Thyroiditis	<p>Thyroid means pertaining to the thyroid gland. -itis means inflammation.</p> <p>Thyroiditis is an inflammatory process in the thyroid.</p>
Thyrotoxicosis	<p>Thyr/o means pertaining to the thyroid gland. Toxic refers to poison. -osis refers to a condition, status process</p> <p>Thyrotoxicosis is the physiological effect of hypermetabolism that results from excess circulating levels of T4, T3 or both.</p>
Thyrotoxic crisis	<p>Thyr/o means pertaining to the thyroid gland. Toxic refers to poison.</p> <p>Thyrotoxic crisis is also known as a thyroid storm. It is an acute condition in which all hyperthyroid manifestations are heightened.</p>

Thank You & Good Luck

